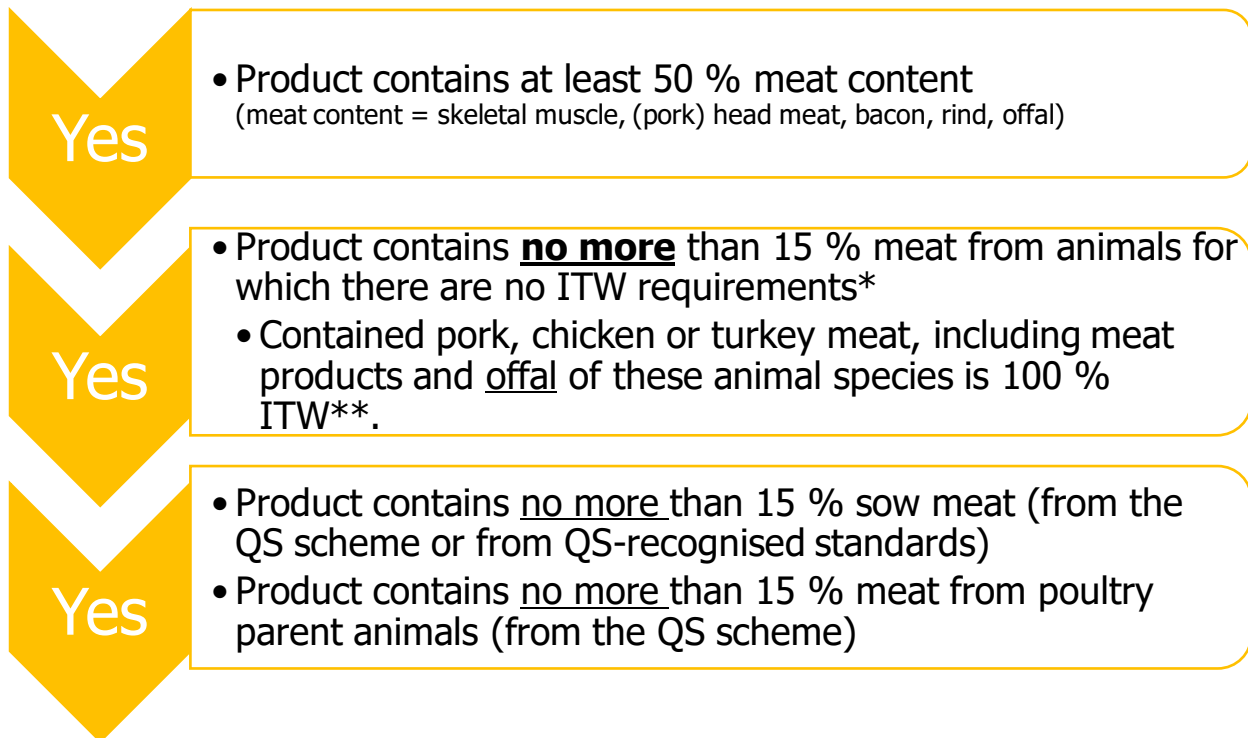
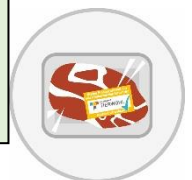


# Information sheet on the labelling of processed food products in the Animal Welfare Initiative from July 2022

Processed goods include all products that have been heat-treated (e.g. deep-fried, scalded, hot-smoked, cooked and pre-cooked), fermented, matured or cold-smoked (raw sausage, raw cured products).



Then the processed article can be marked with the seal of the Animal Welfare Initiative.



\* this includes beef and veal, meat from brother cocks or laying hens, among others.

\*\* For ITW, the technical committees have agreed to accept a maximum meat content of 15% from programs or standards of "Haltungsform" levels 3 and 4 in processed products with ITW label. The permissible meat content (15%) from animal species for which there are no specifications in the ITW can be used in addition.

In the case of products labelled with the ITW seal of the Animal Welfare, the ITW meat contained can also be labelled in the list of ingredients. Please observe the requirements of the LMIV and LMIDV in this regard.

**Gelatine, sausages intestines and blood** do not have to come from ITW animals (without time limit).