



Setup FTP Server

5 steps to secure access to the clearing house

Table of content

| | |
|-------------------------------|----------|
| 1 Preface..... | 2 |
| 1.1 Step 1..... | 2 |
| 1.2 Step 2..... | 2 |
| 1.3 Step 3..... | 3 |
| 1.4 Step 4..... | 4 |
| 1.5 Step 5..... | 5 |
| 2 Contact person | 8 |

1 Preface

You have provided us with a correct interface test file. You have thus fulfilled the prerequisite for using the CSV interface. With this document we would now like to make it easier for you to set up the SFTP access for file transfer. Simply follow the 5 steps below to set up secure access to the clearing house.

In order to transfer the created CSV files to our SFTP server, it is necessary to use an SFTP tool. In these instructions, we use the free and widely used SFTP programme FileZilla. However, you can of course also use any other SFTP programme such as WinSCP.

In addition to these instructions, you will receive the access data to the SFTP server by e-mail. You can retrieve the password via a link in the e-mail itself.

Please note that this link can only be called up **once**! So be sure to copy or make a note of this password for the configuration of your SFTP access in the following steps.

1.1 Step 1

Download the FileZilla SFTP programme (figure based on version 3.53.1) free of charge from the Internet and install the programme on the computer from which the transmission is to be made in future.

Simply follow the installation instructions.

1.2 Step 2

Start the FileZilla programme.

Open the Server Manager by clicking on the icon marked in the following figure to set up the SFTP server:

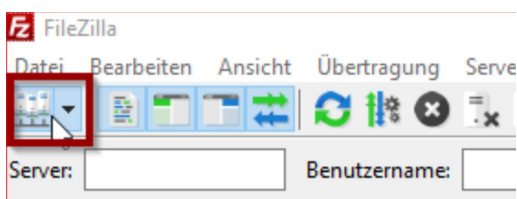


Figure 1: Menu

In the Server Manager, create the access as follows:

First click on **New Server**.

A **New Server** entry appears under **Own Servers**. Please rename it according to your wishes - e.g. **Animal Welfare**.

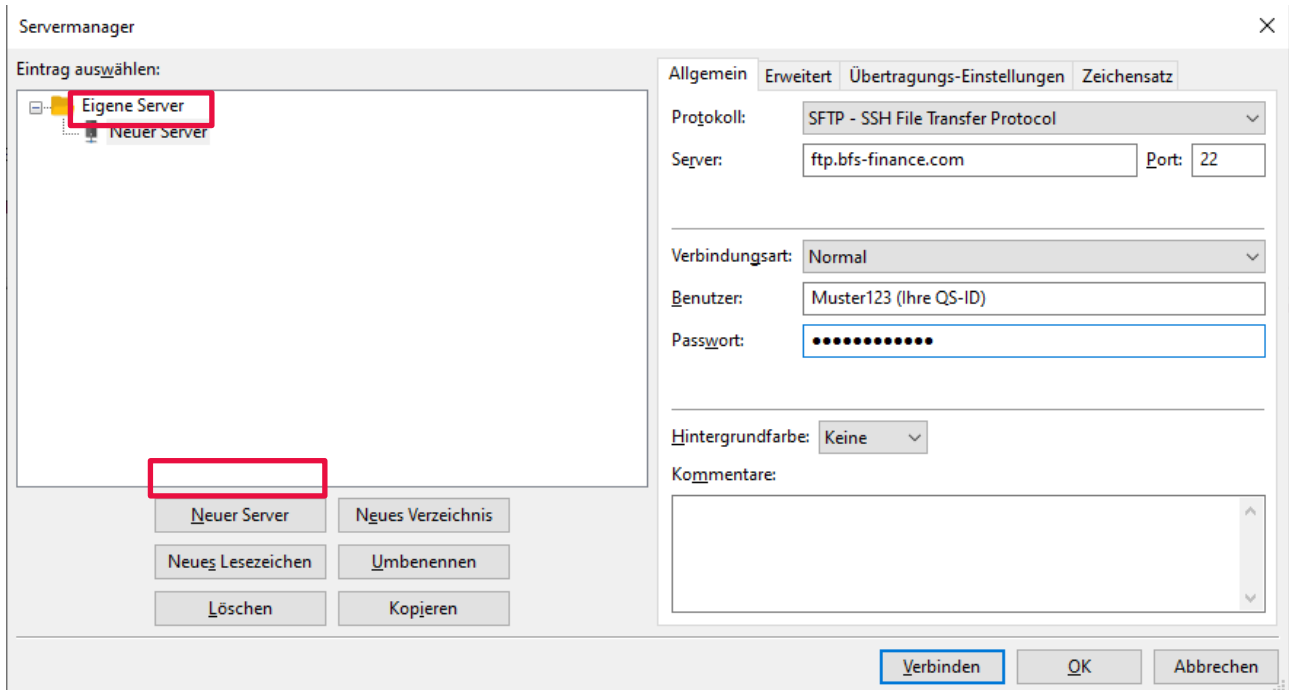


Figure 2: Installation of the server – View 1

1.3 Step 3

Now make the following settings according to the illustration:

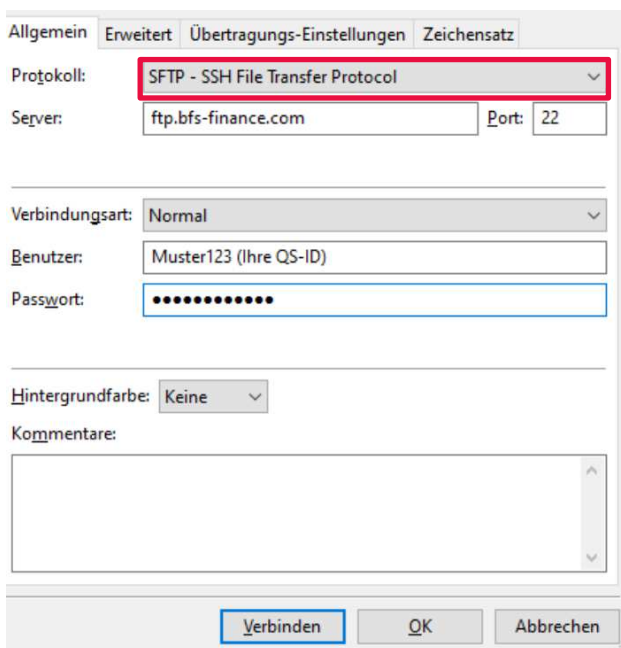


Figure 3: Installation of the server – View 2

Server: **ftp.bfs-finance.com**
 Protocol: **SFTP – SSH File Transfer Protocol**
 Connection type: **Normal**
 User: **Your QS-ID**
 Password: **Your password according to the Password-Link**
Please leave the other setting options at the default values!

1.4 Step 4

Once you have made the settings, please select **Connect**.

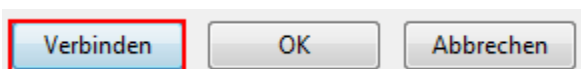


Figure 4: Connect

Depending on the system, you will receive an information message about the certificate exchange when you connect to the SFTP server for the first time.

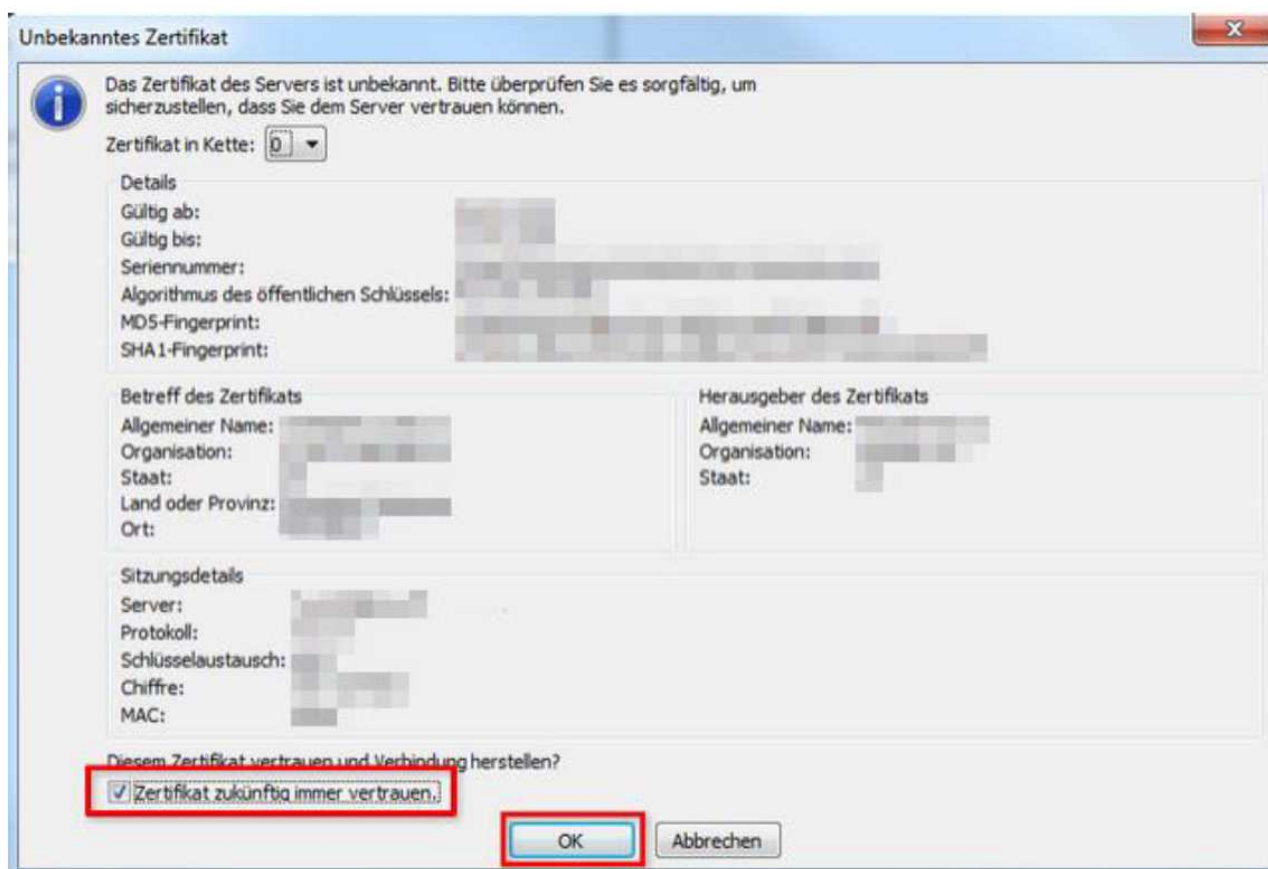


Figure 5: Unknown Certificate

Please select **Always trust certificate** in future and confirm this message with **OK**.

You will then see the folders created in your directory **UP** and **DOWN**.

| Dateiname | Dateigröße | Dateityp | Zuletzt geändert | Berechtigu... | Besitzer/Gruppe |
|-----------|------------|-------------|---------------------|---------------|--------------------|
| .. | | | | | |
| UP | | Dateiordner | 03.06.2020 16:37:27 | drwxr-xr-x | 4953113175766 1441 |
| DOWN | | Dateiordner | 03.06.2020 16:37:32 | drwxr-xr-x | 4953113175766 1441 |
| ARCHIVE | | Dateiordner | 03.06.2020 16:37:41 | drwxr-xr-x | 4953113175766 1441 |

Figure 6: Folder Structure

Congratulations! The SFTP server has been successfully set up!

If you have problems connecting to the SFTP server, please contact us as stated in chapter 2.

1.5 Step 5

In this step we describe the "daily" use of the SFTP server.

If you want to transfer a file to us, open your SFTP programme again (e.g. FileZilla).

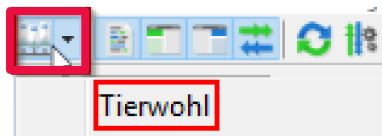


Figure 7: Menu after Installation

In the upper left corner of the window, click on the button highlighted in red in the illustration and select the server created in steps 1-4 with a mouse click.

The SFTP programme now automatically connects to the server.

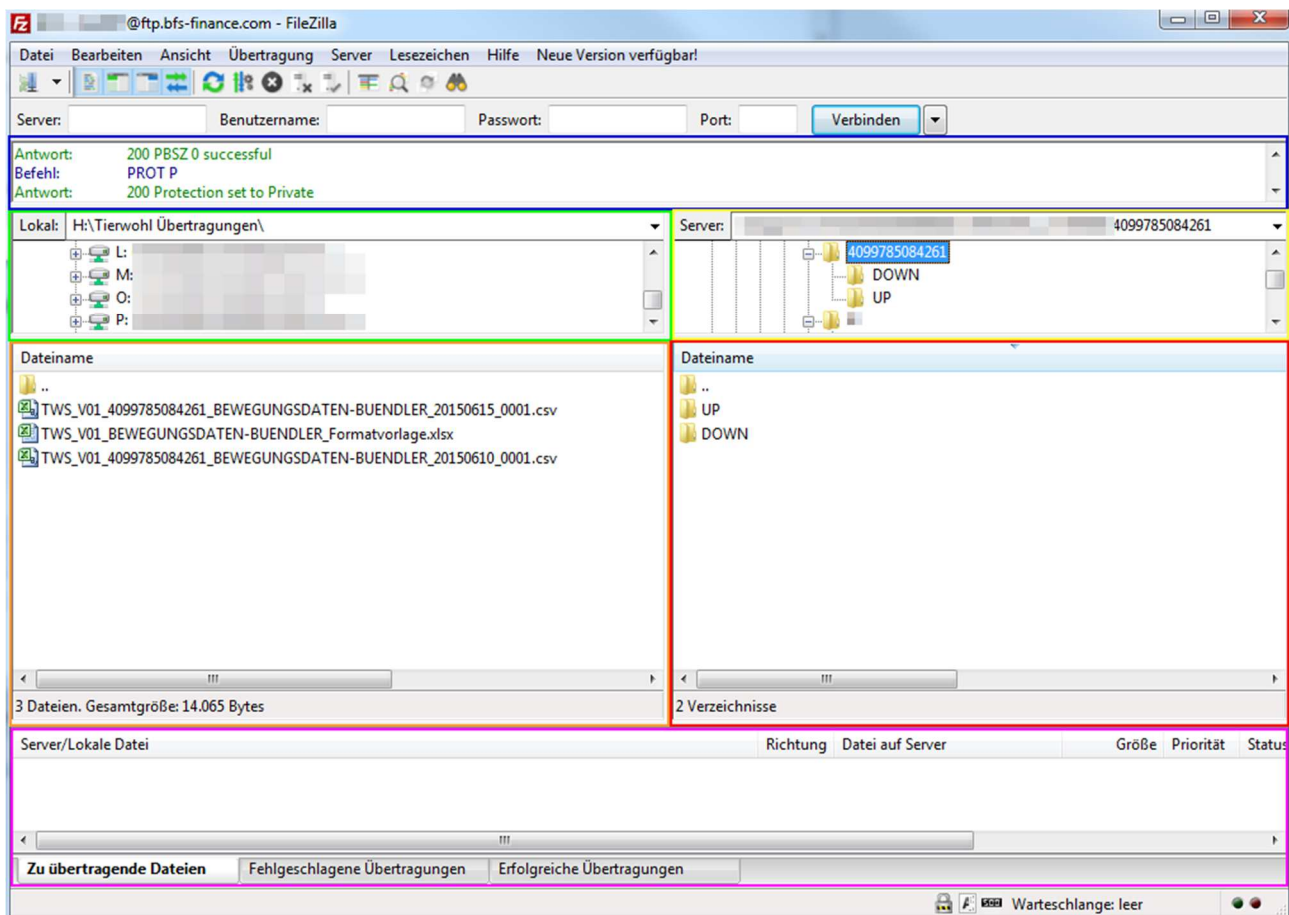


Figure 8: Selection area of FileZilla after installation

The window is divided into six sections which we would like to introduce to you briefly:

- Blue** Connection log - contains data on logging in, error messages, etc
- Green** Local folder structure - shows the hard drives of your computer
- Orange** Shows the contents of the folder selected in the green area of your computer.
- Yellow** Server folder structure - shows the folder structure of the SFTP server
- Red** Shows the **UP** and **DOWN** folders relevant for the transmission
- Purple** Transmission log - Shows the transmissions divided into "in progress" - "failed" and "successful".

If you want to transfer a file to us, select the hard disk on which the file is stored in the green area. file is stored. In the orange area, select the corresponding folder.(Note: FileZilla remembers the folder you last accessed - so you do not have to select this folder again).

In the red area, please select the UP folder by double-clicking. Then select the file you want to transfer to us with the left mouse button - keep the mouse button pressed and drag the file into the area marked red in the illustration below. Release the left mouse button when the mouse pointer is in the area marked red.

Now check in the purple area whether the transfer was successful.

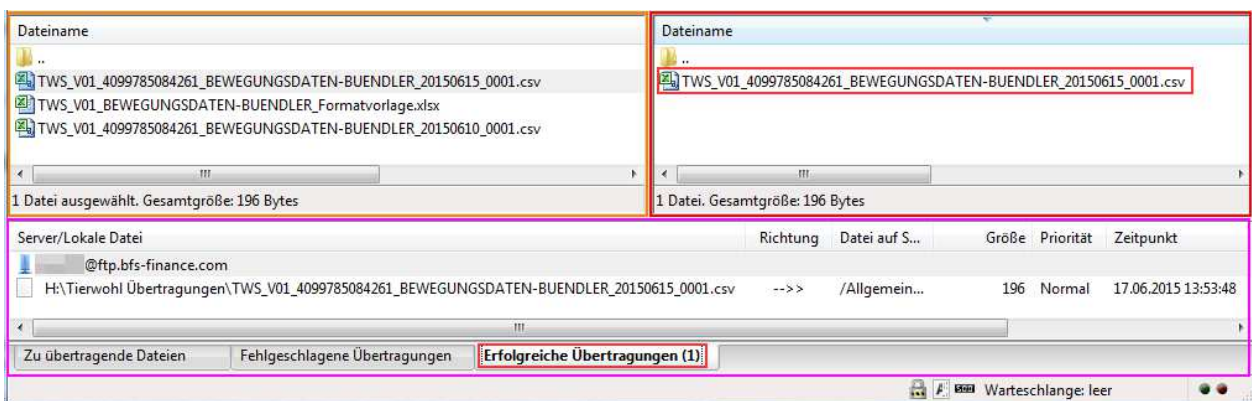


Figure 9: Selection area of FileZilla after installation – Detailed view

The **Successful Transfer** element should now contain a **(1)**. We will process the file during the next night.

If this is not the case, please check whether the transfer may have caused an error. In this case, the **(1)** is behind **"Failed transfer"**. In this case, please try the transfer again.

IMPORTANT: We only process the CSV files that are provided in the UP folder. In addition, the file name must be correct and the date in the file name must correspond to the current date. The files must have been uploaded to the SFTP server by **9:30 pm** for same-day processing.

The next morning you will receive a PDF processing protocol and a CSV response file. You will find this in the **DOWN** directory.

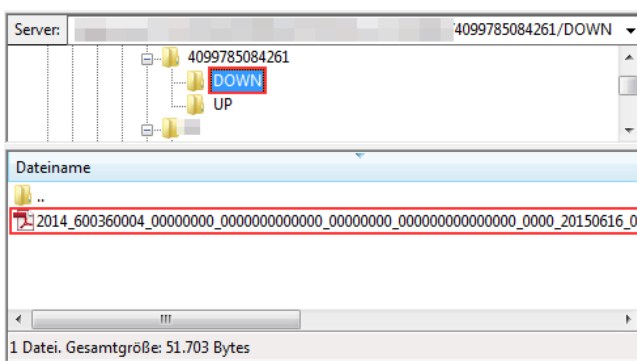


Figure 10: Selection area of FileZilla after installation – Detailed view

Please check the protocol carefully, especially after the first transfer.

2 Contact person

If you have any questions regarding the use of FTP-Server please contact us:

Animal Welfare Clearing House:

Hotline: +49 (0)5241 / 80-43333

E-Mail: initiative-tierwohl@bertelsmann.de

For technical queries on the subject of animal welfare, please contact the supporting organisation:

Animal Welfare Initiative:

Phone: +49 (0)228 / 336485-0

Fax: +49 (0)228 / 336485-55

E-Mail: anfragen@initiative-tierwohl.de

Homepage: www.initiative-tierwohl.de

© Copyright BFS finance GmbH. All rights reserved. All contents (texts, images, graphics) of this manual are subject to copyright protection and other protective laws. The legal protection also applies to databases and similar facilities. The contents may only be freely used for the intended retrieval on the Internet and may not be reproduced, distributed, modified or made accessible to third parties in any form outside the limits of copyright law without the written consent of BFS finance GmbH. Some images in this manual also contain images that are subject to the copyright of third parties. Unless otherwise indicated, all trademarks of BFS finance GmbH are protected by trademark law. The information in this publication has been compiled with the greatest care. However, no guarantee can be given for its usability, correctness and completeness. BFS finance GmbH accepts no liability for damages that may arise from the use of the information. Information contained in this documentation may be changed and supplemented in the course of further technical development without prior notice.